

## Installation Guide for California Instruments GUI Software

### *System requirements:*

**Operating System:** Microsoft Windows<sup>®</sup> 7/8/8.1/10  
**CPU:** Intel<sup>®</sup> Core™ i3 or higher  
**RAM:** 4GB or higher  
**Free Disk Space:** 30MB (For full installation including drivers)  
**Connectivity:** Ethernet 100Base T, USB 2.0

### *Pre-Requisites Software:*

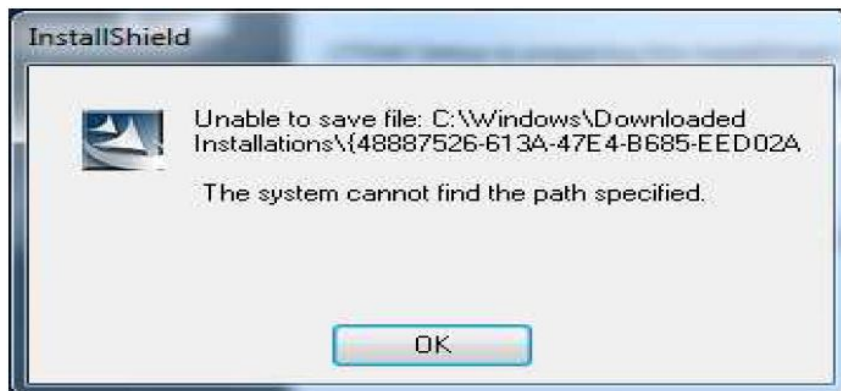
California Instruments<sup>®</sup> USB Driver: ciusb\_29NOV16 (Used for CSW, BPS, iX, RS, MX, Ls, Lx, CompactiX)  
PDF Document Reader

### *California Instruments GUI software Installation Instructions*

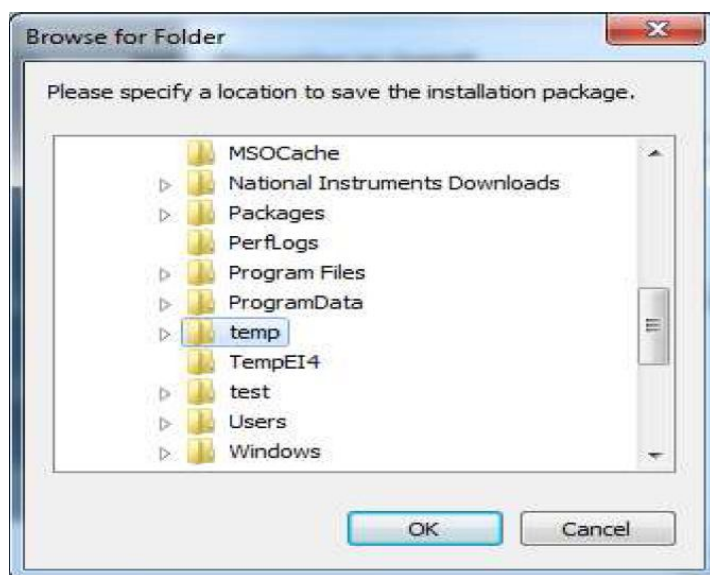
**IMPORTANT NOTE:** If any previous version of California Instruments GUI software is already installed in your system. This must be uninstalled first before continuing with the installation guide.

1. Run California Instruments GUI software Installer.
2. Follow the onscreen prompts to complete installation.

**\*\*NOTE:** Due to Windows 7 user access privileges temporary folder to store the Install package required.



3. If the above message appears, click OK. The install shields will prompt to save the installation package at a location. The installation package can be saved into any location User accessible. For example: "C:\temp".



4. Click OK. The Install Shield process will continue normally. Follow onscreen prompts to complete installation.

### ***USB Virtual COM Port Driver Installation for Windows 7, 8, and 10***

USB Virtual COM Port Driver is available at our website here:

CSW: <http://www.programmablepower.com/ac-power-source/CSW/Downloads.htm>

MX: <http://www.programmablepower.com/ac-power-source/MX/Downloads.htm>

RS: <http://www.programmablepower.com/ac-power-source/RS/Downloads.htm>

iX: <http://www.programmablepower.com/ac-power-source/i-iX-Series-II/Downloads.htm>

BPS: <http://www.programmablepower.com/ac-power-source/BPS/Downloads.htm>

Ls/Lx: <http://www.programmablepower.com/ac-power-source/Ls-Lx/Downloads.htm>

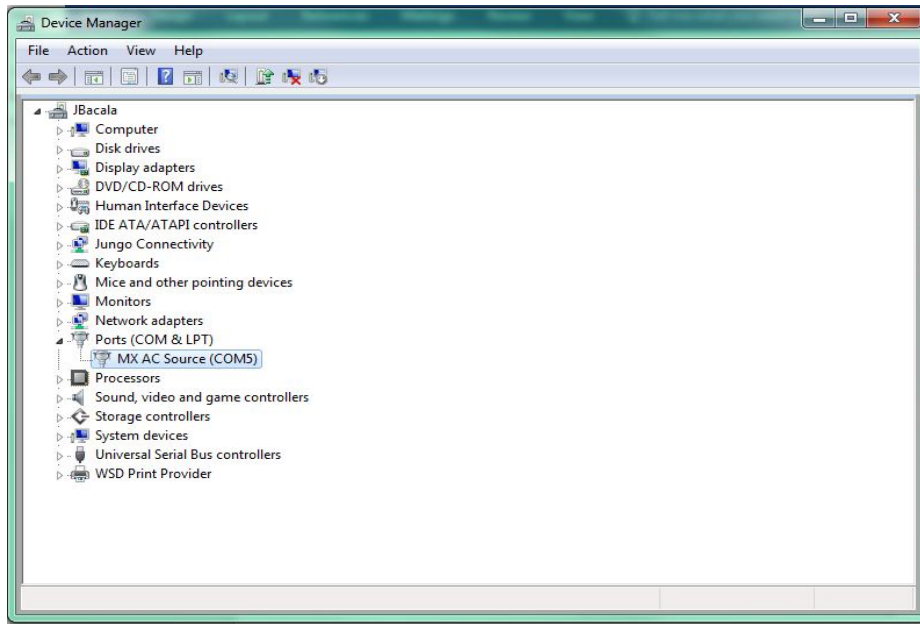
CompactiX: <http://www.programmablepower.com/ac-power-source/Compact-iX-Series/Downloads.htm>

### ***USB Driver Installation for MX, RS, iX, BPS, CSW, Ls/Lx, Compact iX***

1. Open run the “ciusb\_29NOV16.exe” file.
2. In Device Driver Installation Wizard click next through the prompts



3. Connect USB cable from computer to device USB connector on the rear panel.
4. Turn ON device and open Device Manager on PC.
5. In Device Manager window under “Ports” verify COM port appears for device connected.



## ***Technical Support for Virtual Panels***

For technical support or to report bugs and feedback, please contact AMETEK Programmable Power at:

Email: [ci.ppd@ametek.com](mailto:ci.ppd@ametek.com)

URL: [http://www.programmablepower.com/support/support\\_CallInst.htm](http://www.programmablepower.com/support/support_CallInst.htm)

Telephone: +1.800.733.5427